



## THE LIME HOUSE BRADSTOCK GARDENS

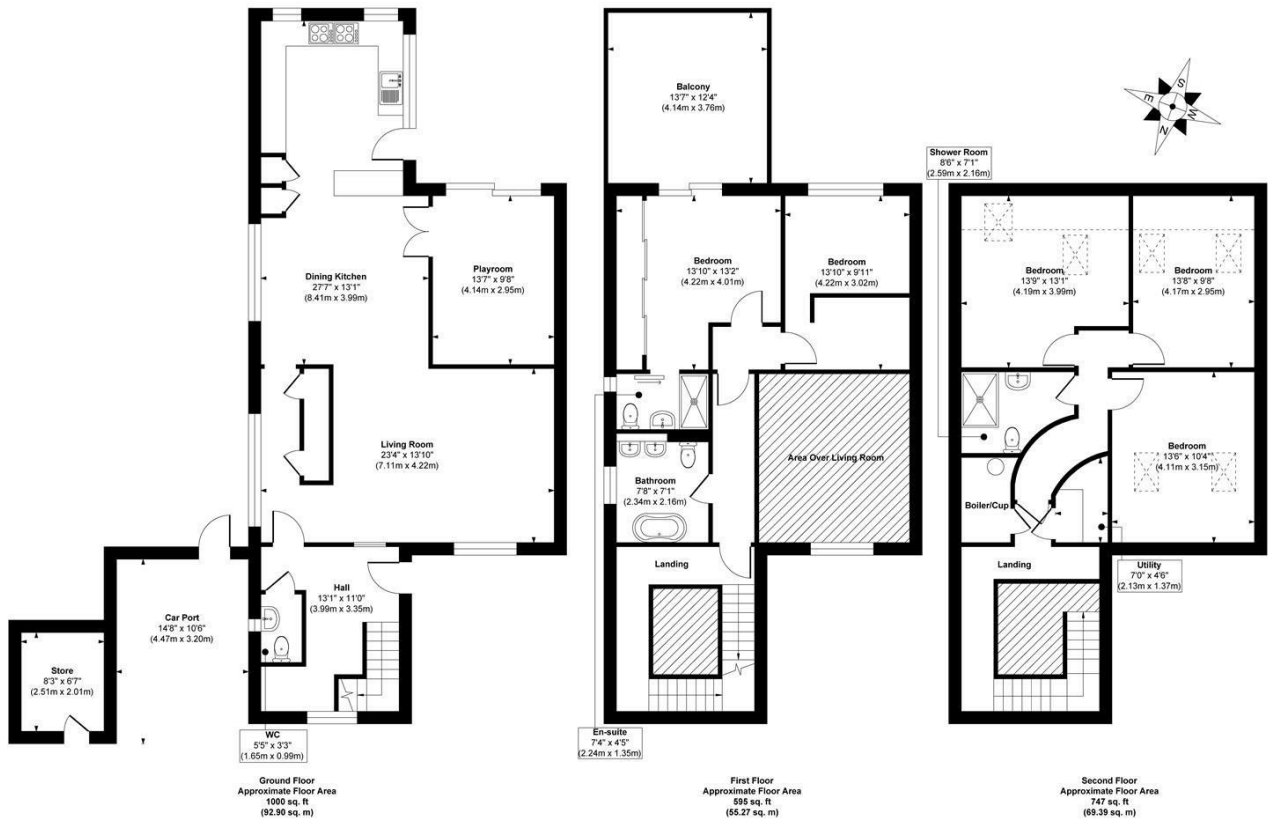
LEEDS, LS27 9PD

£875,000  
FREEHOLD

An exceptional architecturally designed eco home set within an exclusive gated development, offering luxury living in a highly sought-after location. This stunning property features five double bedrooms, a double-height living room, and a spectacular open-plan kitchen/dining/family space, all finished to a high specification throughout. With beautifully landscaped gardens, a private roof terrace, smart home features, and excellent motorway links (M62 & M1), this is a rare opportunity to purchase a truly unique, turn-key family home. Early viewing is highly recommended.

MONROE

SELLERS OF THE FINEST HOMES



**Approx. Gross Internal Floor Area 2342 sq. ft / 217.56 sq. m (Including Store)**

Illustration for identification purposes only, measurements are approximate, not to scale.

Copyright © Show Home.



Energy Efficiency Rating		Current	Potential
Very energy efficient - lower running costs			
(92 plus) A			
(81-91) B			
(69-80) C		80	85
(55-68) D			
(39-54) E			
(21-38) F			
(1-20) G			
Not energy efficient - higher running costs			
<b>England &amp; Wales</b>		EU Directive 2002/91/EC	

Agents Note: Whilst every care has been taken to prepare these particulars, they are for guidance purposes only. All measurements are approximate and are for general guidance purposes only and whilst every care has been taken to ensure their accuracy, they should not be relied upon and potential buyers/tenants are advised to recheck the measurements

Leeds City Centre  
Leeds City Centre  
Whitehall Road Leeds  
LS12 1FJ

0113 350 0866  
citycentre@monroestateagents.com

MONROE

SELLERS OF THE FINEST HOMES